

# GPP Galaxy Integration

## Table of contents:

Introduction	1
Installation	2
Installation Procedure	2
Configuration of the Galaxy Alarm Panel	3
Steps to configure Galaxy in GPP	3
Requirement:	3
Controller network screen	4
Controller screen	4
Event handling program screen	5
Action screen:	5
Maps screen	6
User Authorizations on Groups	7

# GPP Galaxy Integration

## Introduction

The new GuardPoint Pro module, integrates the Galaxy Dimension alarm panel series which gives intrusion security solution for mid to large commercial security installations.

Within GuardPoint Pro, the work with a Galaxy panel is similar to the one with any other Sensor controllers

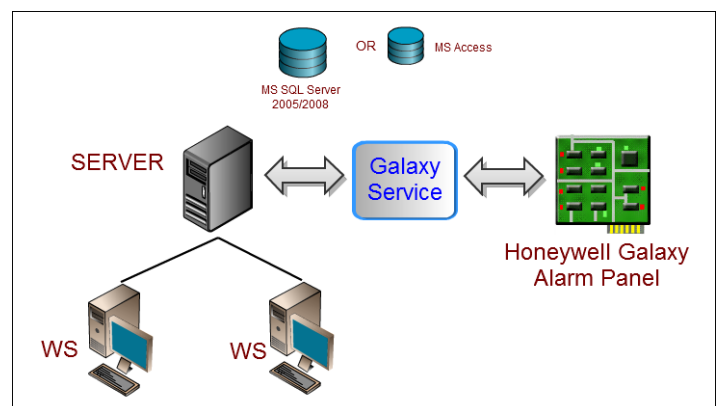
Galaxy zones are managed like Sensor controllers inputs. Icons can be allocated to inputs, which can be positioned on a map. They can be linked to global reflexes. Inputs can be activated or deactivated (un-omit or omit in Galaxy terminology). Alarm events from those inputs will be displayed on the log.

Up to 520 inputs can be configured on one Galaxy device, which is connected to GuardPoint Pro via TCP connection and works in event mode which gives fast response time.

Galaxy Groups can also be managed.

Of course you can mix in a same GuardPoint Pro, alarm from a Sensor controller and from a Galaxy panel.

A new component “GalaxyService” has been developed to support communication with Galaxy panels. It is based on SIA protocol. This component is designed to work as a windows service, and can work independently from GuardPoint Pro. “GalaxyService” can work on a different PC than GuardPoint Pro, or on the same one.



GuardPoint Pro can support any number of Galaxy devices. Since each communication server works as a separate process, many Galaxy devices can work in parallel, and GuardPoint Pro is free of heavy load.

# GPP Galaxy Integration

## Installation

### Installation Procedure

Copy the 4 files in GPP folder

- Step1\_Run\_UninstallGalaxyService.bat
- Step2\_Unzip\_GalaxyService.zip
- Step3\_Run\_InstallGalaxyService.bat
- GalaxyServiceOptions.xml (only if it does not exist)

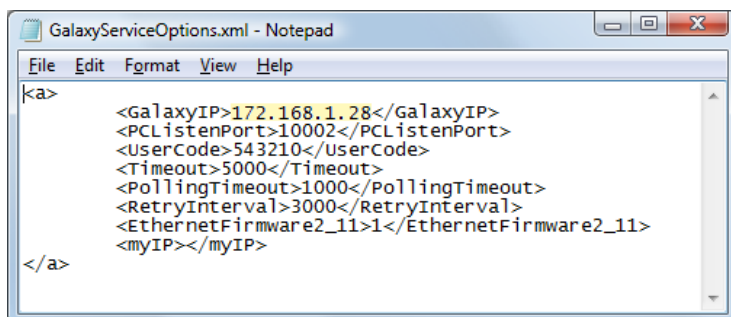
Then:

☐ Double click on Step1\_Run\_UninstallGalaxyService.bat

This will uninstall previous version and stop current running GalaxyService.

Unzip the Step2\_Unzip\_GalaxyService.zip to GPP folder.

Open the file GalaxyServiceOptions.xml by any text editor and update it with the relevant details of the Galaxy Alarm Panel IP



Where

- GalaxyIP is the IP of the Galaxy Alarm Panel
- PCListenPort is the port defined in the Galaxy to send the events (by default 10002)
- UserCode is the Remote User Code defined in the Galaxy Alarm Panel
- Timeout is the maximum number of milliseconds that we are waiting for an answer of a command. It should be increased according to the number of zones of the Galaxy Alarm Panel.
- PollingTimeout is the maximum number of milliseconds that we are waiting for an answer of polling.
- RetryInterval is the number of milliseconds that we are waiting when some commands were not accepted. When no waiting commands, we check each 30 seconds.
- EthernetFirmware2\_11 is 0 or 1. It defined if the Ethernet card firmware is version 2.11 or upper. If this is the case we make polling using Get Time and Date (XTD) if not we use a Login command.
- myIP is the IP address of the current PC. It should release empty to be taken automatically. In specific case (many network cards), it allows to specify an address.

# GPP Galaxy Integration

Double click on Step3\_Run\_InstallGalaxyService.bat  
This will install new version and start GalaxyService.

## Notes:

You must open an exception in the Microsoft Firewall, in order to receive events.  
We use InstallUtil.exe and Sleep.exe that should already exist in GPP folder.

## Configuration of the Galaxy Alarm Panel

The configuration of the IP interface is done by keyboard (or in RSS Software).

Type 112233 + ENT

You should get 10=SETTING

If not press ENT until you get 10=SETTING

If you get "insufficient access rights", Type 12345 + ENT,

48 + ENT

1 + ENT

1 + ENT

1 + ENT (1=Enable). Then you have 10 min to log in with 112233

To access to Ethernet module configuration, go to menu 56.4

(you can type 56 ENT then 4 ENT or navigate A> until 50 ENT, A>until 56 ENT ...)

01=MODULE CONFIG

1=IP ADDRESS            type the IP of the Galaxy panel

4=NETWORK MASK       type the subnet mask by default 255.255.255.0

02=ALARM REPORT

1=FORMAT, Select 1=SIA

Select 4 (SIA Level)

1=TRIGGER EVENTS    Select ON for all the event type

2=PRIMARY IP

1=IP ADDRESS        Type the IP of the GPP Server

2=PORT NO.            10002

4=ACCOUNT NO.        4444 for example

8=PROTOCOL           Select 1=TCP

03=REMOTE ACCESS

1=ACCESS PERIOD        Select 4=ANY TIME

2=MODE                Select 1=DIRECT ACCESS

# GPP Galaxy Integration

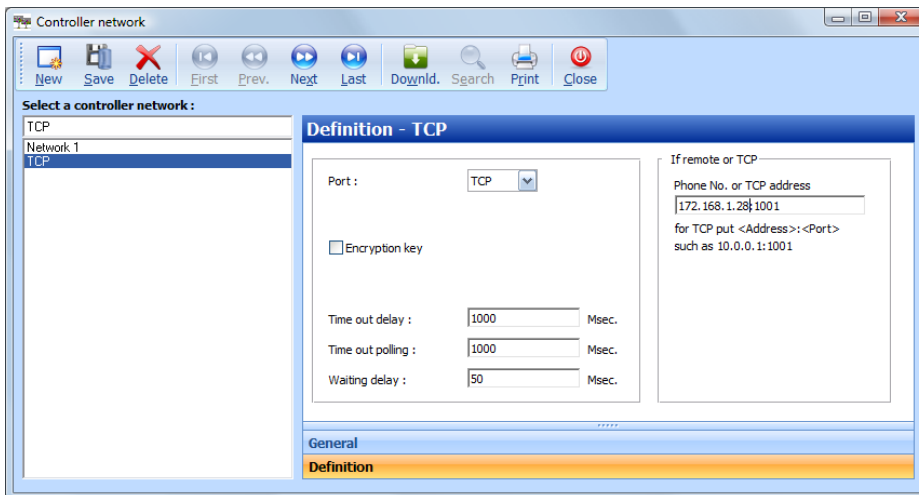
## Steps to configure Galaxy in GuardPoint Pro:

Requirement:

- GPP version 2.3.509 with Alarm Panel (AP) module in the Plug
- Honeywell Galaxy Dimension 48 / 96 / 264 / 520 firmware version 6.50 (or upper) with Ethernet Card (version 2.11 preferable), or Galaxy 3 - 48/144/520

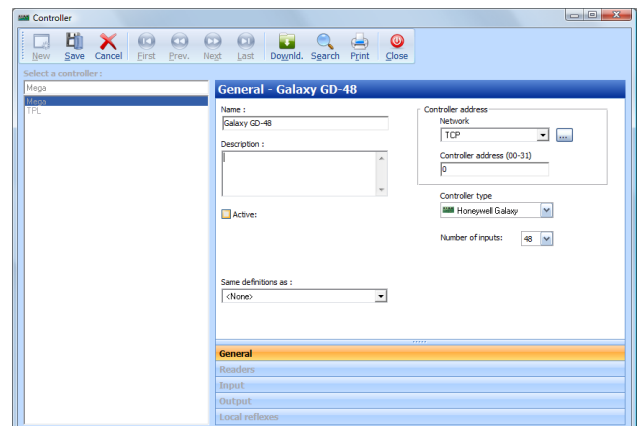
Controller network screen

- Every Galaxy controller must have its own TCP network in the system, through which the Galaxy Service and GPP communicates.
- The IP address is the Galaxy device IP, the port is dummy just for compatibility.



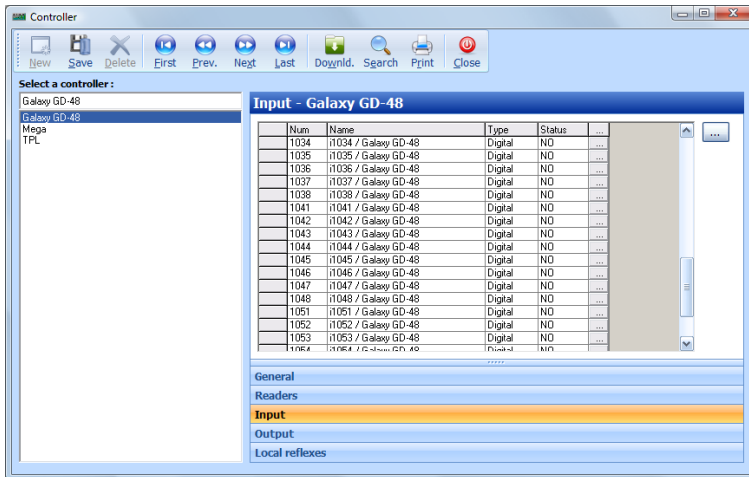
## Controller screen

- A Galaxy controller can be created like any other controller, you just select Galaxy type and the number of inputs.
- The controller address is dummy, so just put 0.
- Every Galaxy controller should have its own TCP network.



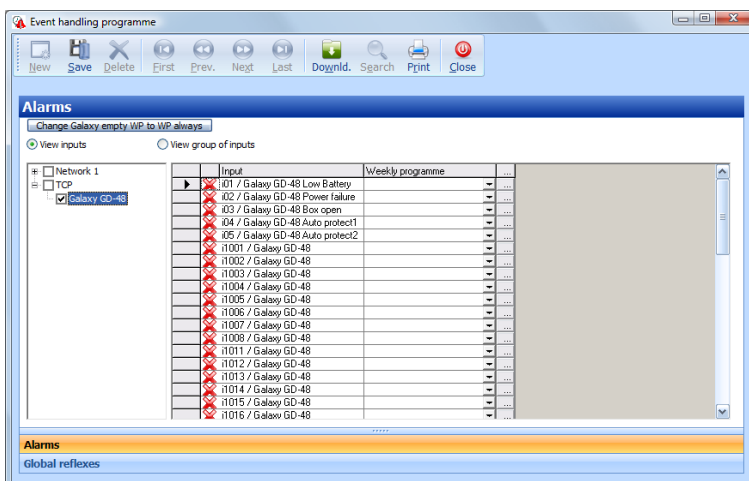
# GPP Galaxy Integration

All inputs and outputs will be created automatically by GPP.



## Event handling program screen

- Unlike all other Sensor controllers, the Galaxy panel will support (for now) only two Weekly Programs, "WP Always" and "WP Never".
- "WP Never" for input, will make the input "Omit", "WP Always" will set the input to be "Un omit"

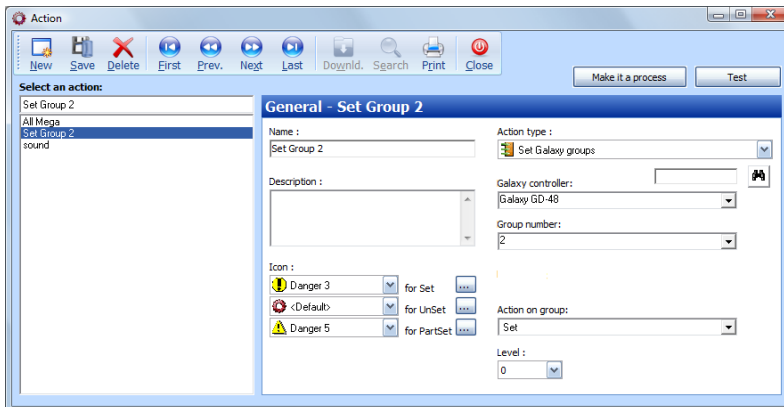




# GPP Galaxy Integration

## Action screen:

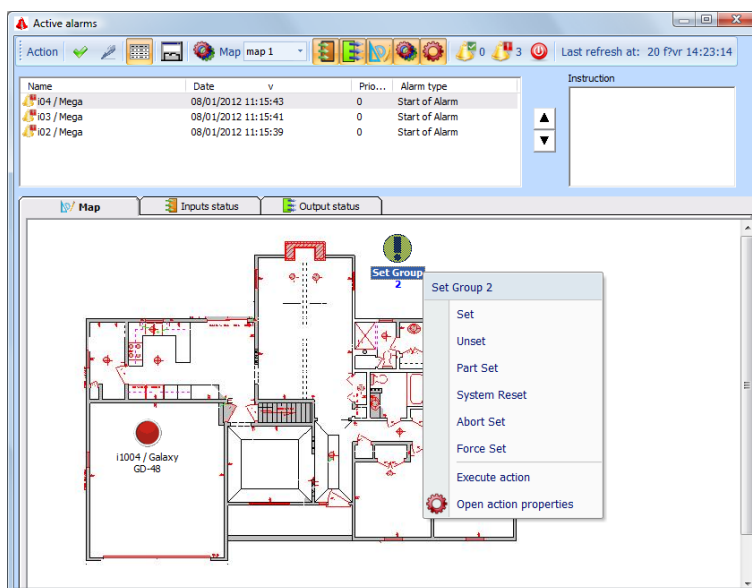
- A New action type has been added to support Galaxy groups.
- Operations on input Groups of Galaxy can be done by Action type “Set Galaxy groups”.



## Maps screen

The action referring to galaxy group can be shown on a map.

- Right click on an action which refers to a galaxy group, will open the menu from which you can perform on the group some operations: Set, Unset, Part set, System reset, Abort set, Force set.



- The state of the group will be shown by a different icon for each state (Set, Unset, Part set).
- Since Galaxy groups can be updated from Galaxy panel as well, the “Galaxy Service” will listen to all updates of Galaxy and report to GPP.

# GPP Galaxy Integration

## Full cycle notification:

- After setting to new state from the group menu, GPP reports to Galaxy Service to update Galaxy, Galaxy will report asynchronously the communication server about the new state of the group, and this information will be reported back to GPP. So if you set new state for a group and see the icon changes respectively you can be sure the Galaxy got it!!!

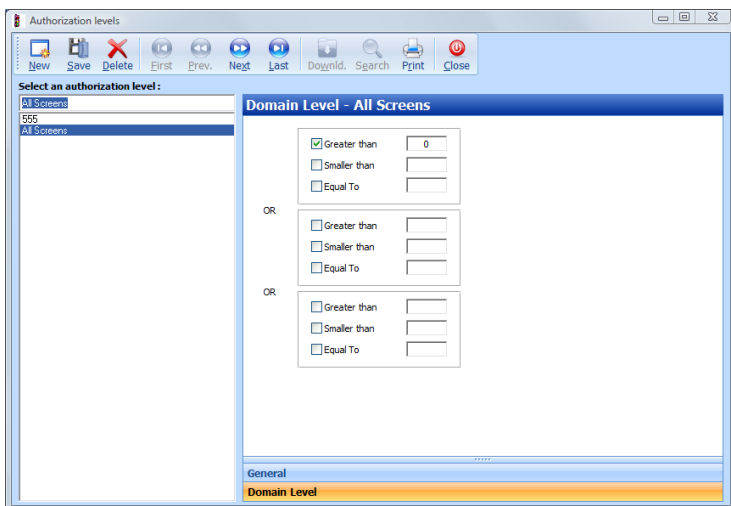
The action referring to galaxy inputs will be shown on a map.

- Inputs menu from right click will have the options for “Deactivate” and “Return to normal” as before.
- When the “Galaxy Service” starts, it updates all inputs and groups status.

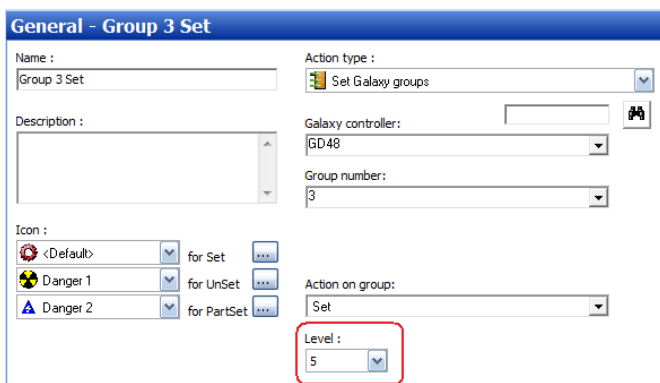
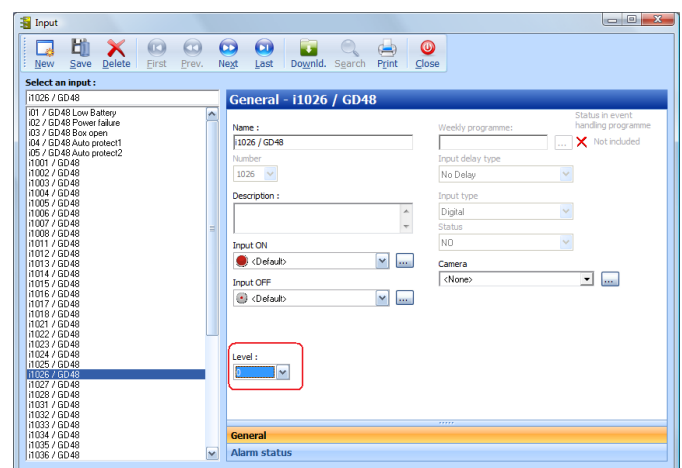
## User Authorizations on Groups

We add a Domain Level definition in the Authorization levels: it defines on which levels can operate the user that have this Authorization level.

- All Screen can operate on everything (greater or equal to zero)



Note: Only Super User can change these settings.  
On Galaxy groups' actions and on Galaxy Zones could be defined a level.



## GPP Galaxy Integration

When a User in the software try to execute an action on a Galaxy Group or a Galaxy zone, we first check that the level of the group or of the input is included in the user Domain level.