

Programmable Card Format Guide For Configuring Aperio Locks with Sensor SF Readers and Cards.

Introduction

The scope of this document is to instruct the user how to send the correct script to a Sensor controller enabling Aperio wireless locks to be used in conjunction with Sensor SF readers and cards. (Please note this will only work with 2 & 4 door controllers manufactured after 2008)

The Scripts

2 doors

```
03 01 87 20 00 00 00 00 00 00 00 00 00 00 00 00 02 87 20 00 00 00 00 00  
00 00 00 00 00 00 00 00
```

4 doors

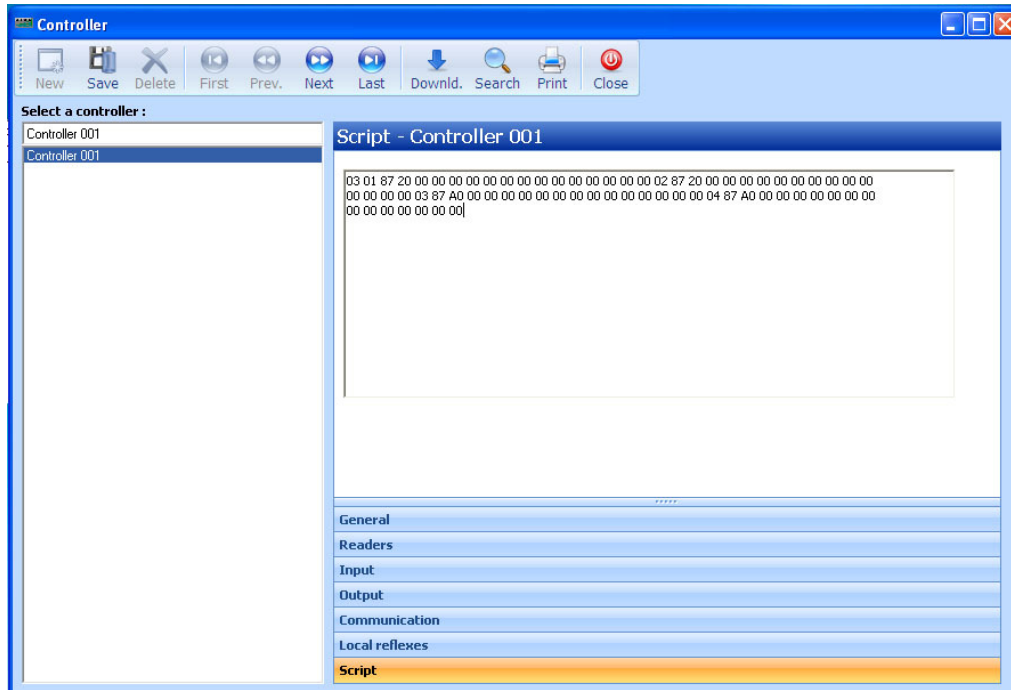
```
03 01 87 20 00 00 00 00 00 00 00 00 00 00 00 02 87 20 00 00 00 00 00  
0000 00 00 00 00 00 00 00 03 87 A0 00 00 00 00 00 00 00 00 00 00 00 04  
87 A0 00 00 00 00 00 00 00 00 00 00 00 00 00
```

Creation of Own Scripts

The above scripts would affect all readers on a controller. The situation may arise when you would want to use differing card formats for individual readers or only want to change reader 1 & 3, in this case you may want to write your own script with our script writer available for download here

<http://public.sensoraccess.co.uk/GuardPointPro/Software/Service/ScriptCalculationUserDefinedFormat.zip>

See the picture below:



Press Save to download the code to the controller and repeat this operation for each subsequent controller